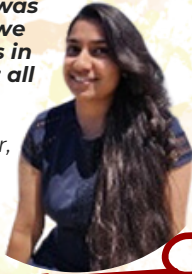


MSCE, General

I loved the subjects I was studying, the professors, and classes. Since most of my friends consisted of international students, I found a sense of community — professors were very supportive and understanding that English was not our first language and we had different methodologies in our learning backgrounds. It all helped for a very smooth transition.

- Ashwarya Sambasivan Iyer,
MSCE General



Our program offers a comprehensive education that covers the core areas of Civil Engineering, providing you with a strong foundation in structural engineering, geotechnical engineering, construction engineering, transportation engineering, environmental engineering, and water resources engineering.

WHY CHOOSE USC?

- **Comprehensive Expertise:** Gain knowledge in various civil engineering specialties, making you adaptable to **diverse career paths**.
- **Customizable Curriculum:** Tailor your education by choosing courses in **your preferred specialty areas**, allowing you to align your studies with your career goals.
- **Diverse Career Paths:** Prepare for a **wide range of roles in civil engineering**, from structural design to transportation planning, thanks to a comprehensive curriculum.



Scan to learn more about our Master's degrees and the Astani Graduate Scholars Program!

**All applicants who submit an application by the deadline are considered for merit-based scholarships. The Astani Graduate Scholars program offers engagement in academic and industry research, along with financial support.*



MSCE, General

USC provides students with precious academic resources, and we learn so much knowledge both in class and out of class.

Professors are knowledgeable and well-prepared. They also encourage the students to join professional organizations and sponsor them for some activities, which are useful to connect with professionals and to explore our career interests!

*-Zhenlu Huang,
MSCE General*



OUR GRADUATES GO TO:

CLARK CONSTRUCTION GROUP,
HSA & ASSOCIATES, BLACK &
VEATCH, WALTER P. MOORE,
WEBCOR, SWINERTON, DPR,
AECOM, TURNER, ARUP

SAMPLE COURSES:

- CE 516: Geohydrology
- CE 520: Ocean and Coastal Engineering
- CE 537: Advanced Reinforced Concrete
- CE 539: Advanced Steel Structures
- CE 585: Traffic Engineering and Control

KEY FACULTY



Dr. Patrick Lynett

Understanding of coastal processes, such as nearshore circulations, wave evolution from generation to the shoreline, multi-scale hydrodynamic interactions, and sediment transport



Dr. Burcin Becerik-Gerber

Advanced data acquisition, modeling, visualization for design, construction, and control of user-centered responsive and adaptive built environments



Professor Henry Koffman

Real estate land developer, licensed building contractor and registered Professional Engineer in the State of California



Dr. Amy Rechenmacher

Geotechnical engineering, geomechanics, engineering mechanics, engineering education